



90%

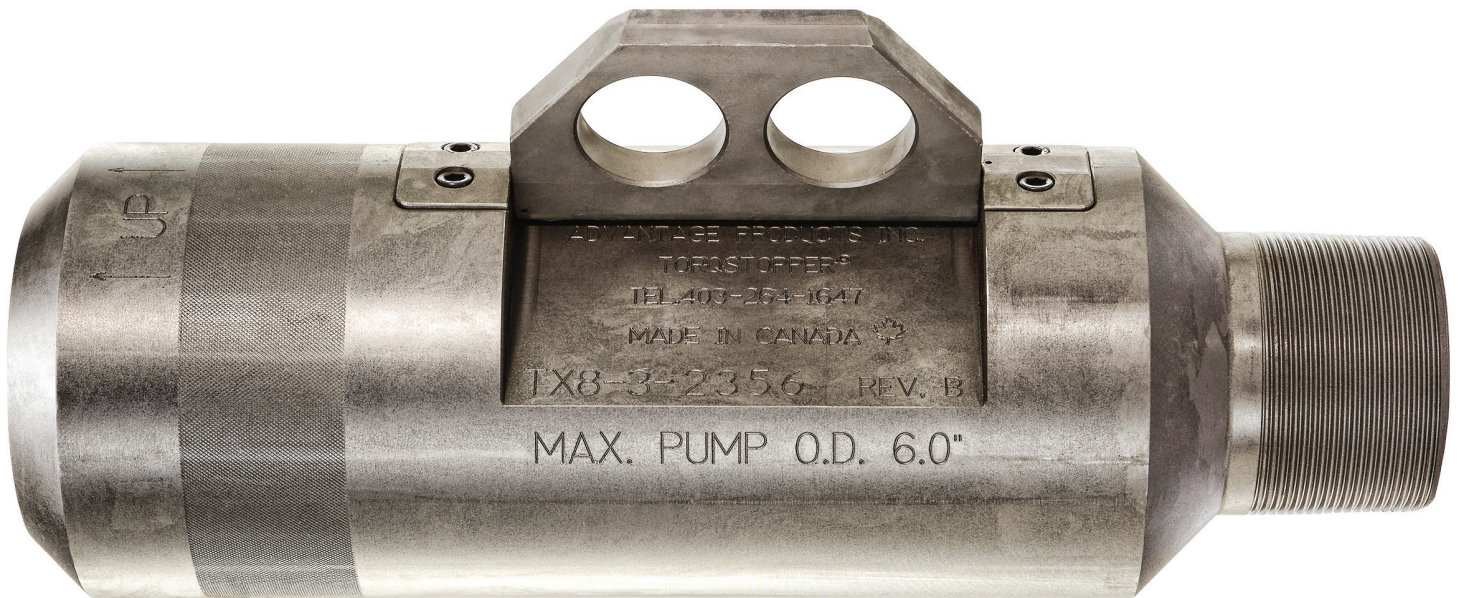
North American
market share

+40k

sold worldwide

Lowest Cost
of Ownership

with long life and low service cost



There's a reason why it's the top-selling torque anchor tool in North America.

Advantage Products' flagship tool, the *TorqStopper*TM combines innovation, performance and superior design, and is the top-selling torque anchor tool in North America. Its proprietary design transfers PC pump torque to the casing wall instead of allowing it to propagate up the tubing string. This is achieved through the use of a simple door that wedges the pump to the low side of well bore providing maximum stability against vibration as well as preventing the pump or tubing from backing off and falling down the well.

This simple tool has saved our customers millions of dollars in downtime, operational and repair costs. Easy to use, and even easier to reap its rewards, the *TorqStopper*TM has offered our customers not only a solution to one of the most common problems plaguing PC pump operations, but also a competitive edge.



Case Study

With over 40,000 units in operation worldwide, many success stories are attributable to the robust design and operational innovations offered by the *TorqStopper™*.

In one particularly challenging oil well operated by a customer in Taber, Alberta, a single *TorqStopper™* has been in service for more than six years, without a single service or repair required.

The *TorqStopper™* has been used in this high-volume, high-speed pump production well, which has been serviced with six new pumps. With each servicing, the *TorqStopper™* has been analyzed for wear and tear and has shown no sign of damage to date, proving its staying power.

This customer had previously utilized competing torque anchor products with frustration, having to frequently service and even replace the competitors' torque anchor prior to discovering the benefits of the *TorqStopper™* to their operations.

Saving millions of dollars in downtime, lost production, repairs and replacement, the *TorqStopper™* has earned the right to be labeled as the most reliable, robust torque anchor tool on the market.

TorqStopper™



Competition



The *TorqStopper™* actually leaves greater annular space for gas breakout, with customers seeing an increase in production in many cases.



TorqStopper™ Size & dimensions (table 1)

MODEL	CASING	CASING WEIGHTS	THREAD	COIL TUBE BYPASS SIZE
TX4-2 3/8	4 1/2 "	All common weights	2 3/8 " EUE	N/A*
TX4-2	4 1/2 "	All common weights	2 7/8 " EUE	N/A*
TX5-2	5 1/2 "	All common weights	2 7/8 " EUE	3/4 "
TX5-3	5 1/2 "	All common weights	3 1/2 " EUE	N/A*
TX6-2	6 5/8 "	All common weights	2 7/8 " EUE	3/4 "
TX6-3	6 5/8 "	All common weights	3 1/2 " EUE	3/4 "
TX7-2	7"	All common weights	2 7/8 " EUE	1 1/4 "
TX7-3	7"	All common weights	3 1/2 " EUE	1 1/4 "
TX7-4	7 5/8 "	All common weights	4 1/2 " EUE	3/4 "
TX8-3	8 5/8 "	All common weights	3 1/2 " EUE	1 3/4 "
TX9-3	9 5/8 "	All common weights	3 1/2 " EUE	2"
TX9-4	9 5/8 "	All common weights	4 1/2 " EUE	1 3/4 "
TX10-3	10 3/4 "	All common weights	3 1/2 " EUE	1 3/4 "

MODEL	O.D	ID	LENGTH	WEIGHT (LBS)
TX4-2 3/8	3.40"	2.00"	13.00"	17
TX4-2	3.75"	2.44"	12.50"	17
TX5-2	4.00"	2.44"	15.00"	27
TX5-3	4.50"	3.00"	15.00"	31
TX6-2	4.50"	2.44"	15.50"	40
TX6-3	4.50"	3.00"	15.50"	31
TX7-2	5.00"	2.44"	16.00"	54
TX7-3	5.00"	3.00"	16.00"	45
TX7-4	5.625"	3.85"	16.00"	47
TX8-3	6.00"	3.00"	18.25"	85
TX9-3	6.20"	3.00"	20.50"	101
TX9-4	7.00"	4.00"	19.00"	109
TX10-3	7.875"	3.00"	19.00"	166

*Coil tubing by-pass not applicable to these models



TorqStopper™ User Instructions

Recommended Setting Procedure

1. Having first liberally applied thread compound (recommend high pressure thread compound as specified in API Bulletin 5A2 on Thread Compounds) to the entire internal and external threaded areas, orient the *TorqStopper™* in accordance with the orientation as shown on the top of the tool then hand tighten to the pump stator and tubing. Then apply the correct torque to the connections as required for the diameter and grade of tubing used. (Table below provides references)
2. Run to desired depth
3. Install dognut
4. Rotate tubing to the right (CW) until the tool sets. When the tool has set apply an approximate preload equal to 50 to 60% of the recommended make-up torque for diameter and grade of tubing being used. (See Table below for references)
5. While maintaining torque, land the dognut
6. The *TorqStopper™* is set

Release Procedure

1. Pick up on dognut
2. Rotate tubing to the left (CCW) until preload is released, then rotate a further ¼ - ½ turn to left (CCW) to release tool.
3. Pull up on the tubing
4. The *TorqStopper™* is released

Special Instructions: "S" Bend Deviated wells

The following setting procedure is for use on 'S' Bend Deviated Wells.

1. Land the dognut as normal.
2. Stroke tubing up and back 12" – 18" (30 to 45 cm) 4 times
3. With the tubing in the lowered position, apply a minimum of 500 ft-lbs setting torque as specific in the table below.
4. Stoke the tubing again along the 12" – 18" (30 to 45 cm) another 5 to 6 times while maintaining the setting torque.
5. Land the dognut and complete.

The *TorqStopper™* will now be set.

If the setting is applied without stroking the tubing, the *TorqStopper™* may not set due to the lack of torque transmission below the 'S' bend.

Attention!

1. When installing any *TorqStopper™* onto a Pump Stator or other hardware, the diameter of the stator or other hardware must not exceed the diameter of the *TorqStopper™*. If this instruction is not followed, the *TorqStopper™* will not function correctly.
2. If down-hole data acquisition equipment (e.g sensors) is used and the above instruction is not followed, damage to the equipment may occur.

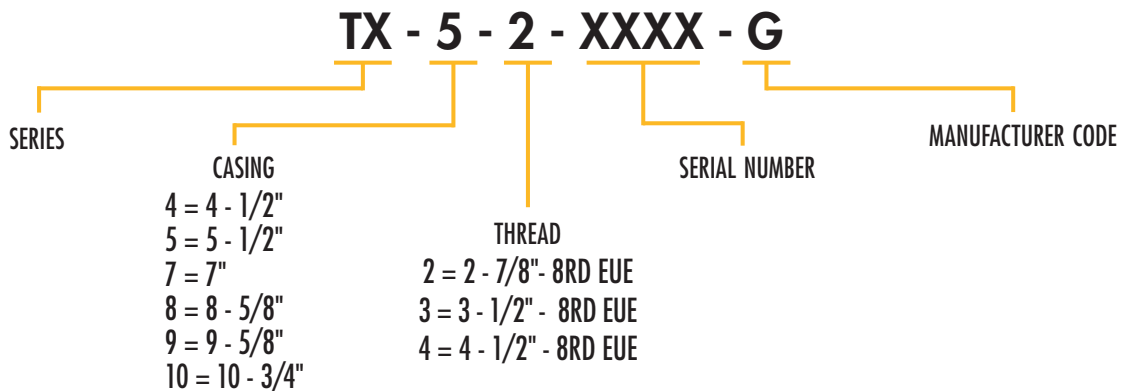


Recommended Make-Up Torque

Per API RP 5C1: Care and Use of Casing and Tubing

	Weight lb./ft. (Threaded and Coupled)			Torque ft.-lb					
	NON-UPSET	UPSET	GRADE	NON-UPSET		UPSET			
				Min.	Opt.	Max.	Min.	Opt.	Max.
2 3/8 "	4	-	J-55	460	610	760	-	-	-
	4.6	4.7	J-55	550	730	910	970	1290	1610
2 7/8 "	6.4	6.5	J-55	790	1050	1310	1240	1650	2060
	7.7	-	J-55	910	1210	1510	-	-	-
3 1/2 "	9.2	9.3	J-55	1110	1480	1850	1710	2280	2850
	10.2	-	J-55	1290	1720	2150	-	-	-
	12.6	12.75	J-55	1310	1740	2180	2150	2860	3580

TorqStopper™ Nomenclature

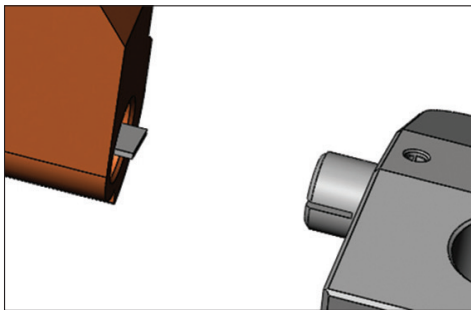




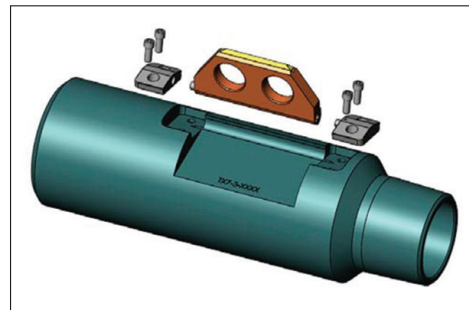
TorqStopper™ Service kit Installations

Tx*-* Series Torqstopper E.G. Tx7-3

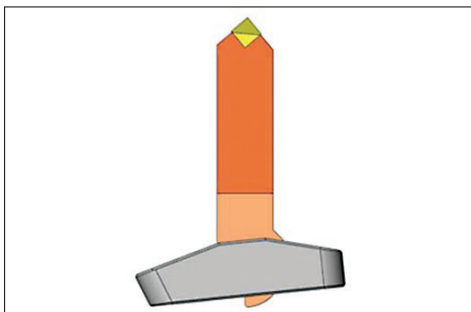
1. Using the 3/16" Allen wrench provided undo the 4 x 1/4"-28 NF socket head capscrews that hold the door assembly in place. (fig.2)
2. Lift out the door assembly, noting the position of the Pin End Hinge Block to the door. (fig.2) & (fig. 3)
3. Clean thoroughly with a good cleaner e.g. Varsol.
4. Ensure that the Spring (fig.1) inside the door engages the Slot in the Pin End Hinge Block (fig. 1) and once installed is in the position shown in (fig.3).
5. Fit the Box End Hinge Block over the Hinge Pin and install the complete door assembly. (fig.2)
6. Before installing new socket head cap screws, the Loctite 214 included in the kit must be applied to the threads of the screws.
7. Having applied the Loctite, install new screws and tighten using Allen wrench.



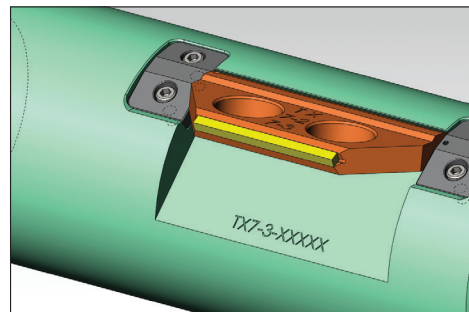
(Fig.1)



(Fig.2)



(Fig.3)



(Fig.4)

No Warranty is expressed or implied by Advantage Products Inc. with respect to the incorrect installation or use of a TorqStopper™